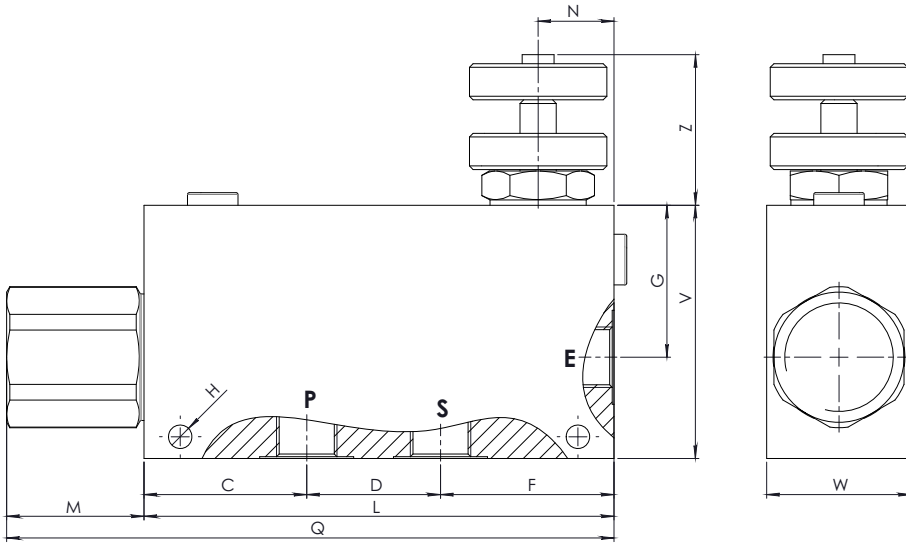
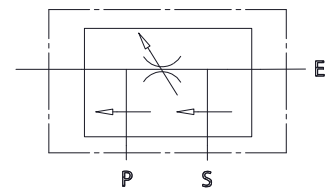


Dimensions



Hydraulic Symbol

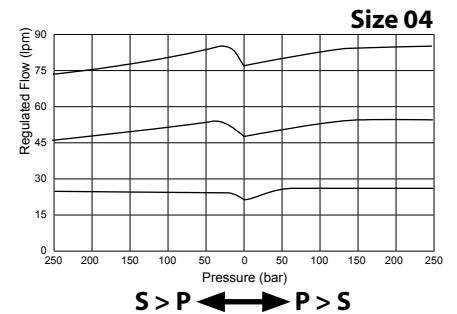
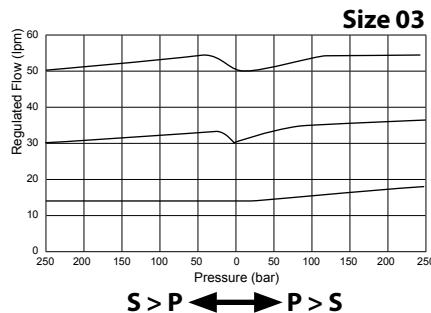
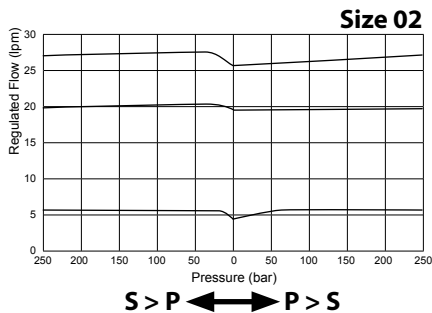


Features

Size	E-P-S BSP	A	B	C	D	F	G	H	M	N max	Q	R	T	V	Z	Weight kg
02	3/8	130	33	27,5	50	35	10	8,5	22	42,7	35	12	80	10	34	2,78
03	1/2	130	33	27,5	50	35	10	8,5	22	42,7	35	12	80	10	34	2,71
04	3/4	155	55	31,5	47	50	20	8,5	22	38	55	12	100	15	34	5,55

Size	02	03	04
Max Pressure (bar)	260	260	260
Max Inlet Flow (lpm)	50	85	150
Max Adjustment Flow (lpm)	40	60	90

Curves



Materials: Aluminium body, hardened steel inner parts.

Ordering Code

PVEL --

	Size BSP
02	3/8
03	1/2
04	3/4

Ordering Code Example: PVEL03 = 1/2 BSP.